

Courtesy Copy: COVID-19 Members Briefing 29 January

Rachel Palmer <Rachel.Palmer@eastriding.gov.uk>

Fri 29/01/2021 17:11

Dear town and parish council clerk,

Please find below a courtesy copy of the weekly East Riding of Yorkshire COVID-19 update for members. Please feel free to share with your councillors.

All the very best,

Rachel

Rachel Palmer

rachel.palmer@eastriding.gov.uk

Communications Officer (COVID-19)

www.eastriding.gov.uk/3stepstosafety





Members COVID-19 briefing

Dear members and colleagues,

This message is sent at the request of Councillor Richard Burton, leader of the council, Caroline Lacey, chief executive, and Andy Kingdom, director of public health.

Here is today's briefing regarding the situation with COVID-19 and a summary of the council's activity and planned actions. This update will be sent weekly to members over the winter period.

As the COVID-19 pandemic continues, the council is continuing to do all it can to maintain services wherever possible during these challenging times, while prioritising resource on where it is needed most.

During this extraordinary period, please direct any questions and suggestions you may have to the group offices and please bear with us as we won't be able to respond to lots of member communications as quickly as normal. Please bear in mind we are focusing on essential service delivery.

You can refer to the council's website www.eastriding.gov.uk/coronavirus for the most up-to-date position on changes to services.

Placeholder: COVID-19 update for members - 2 February @ 2pm



A COVID-19 update, including Q&As, will be held for members on Tuesday 2 February at 2pm. Please watch out for your invitation. The session will include updates from Caroline Lacey, chief executive, Andy Kingdom, director of public health and Mike McDermott, associate director of public health.

COVID-19 update

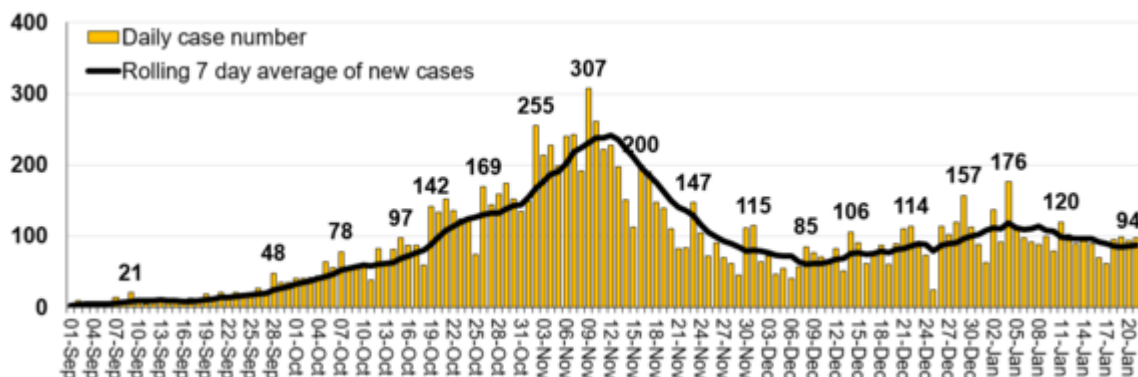


- **New cases – numbers remain high but continue to reduce**
- **7 day rate of new cases – continues to decrease and remains lower than both region and England**
- **Cases in older people – rates continue to remain high in the very elderly**
- **Rates slowly decreasing in most areas of the East Riding**
- **Hospitalisation due to COVID-19 – COVID patients occupying beds and continuing to increase pressure on hospital services and staff**

New cases – numbers remain high but continue to reduce

Since the start of the pandemic, there have been over 14,700 positive cases in the East Riding. The 7 day average of new cases from September onwards is visible in chart 1 and shows the number of new cases continues to decrease, as they have been doing since early January. Last week there had been approximately 95 new cases per day but in the 7 days to 21 January it reduced to around 86 cases per day.

Chart 1. East Riding of Yorkshire residents - new daily cases of COVID-19



7 day rate of new cases – continues to decrease and remains lower than both region and England

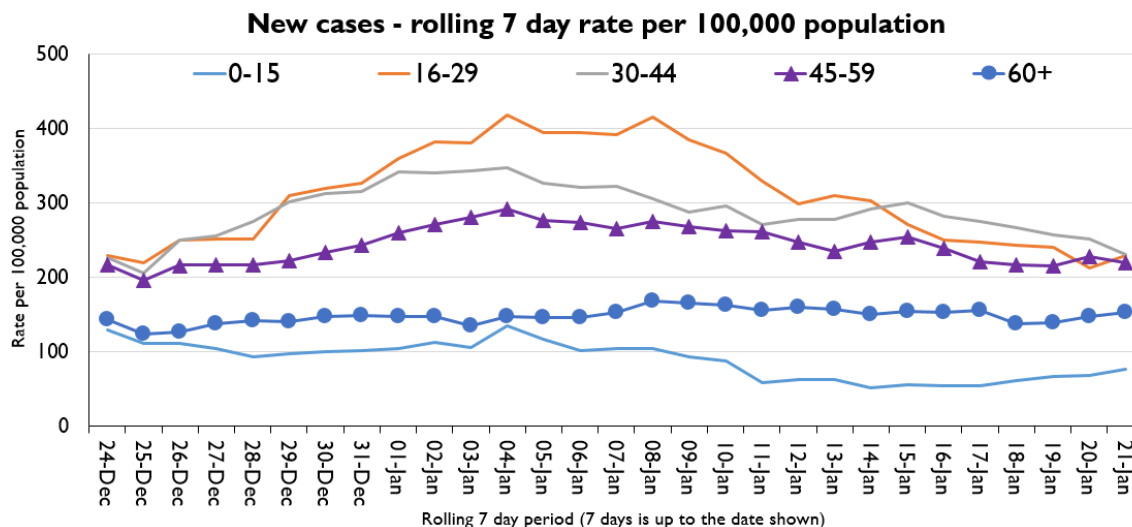
The most commonly used way of understanding the trend in new cases and taking account of day to day fluctuations is the '7 day rate'. For the 7 days up to 21st January, the East Riding rate (177 per 100,000 population) remained lower than both the regional (253) and England rates (404). It has been steadily decreasing since early January. However, the East Riding rate remains almost 3.5 times the 50 per 100,000 threshold which was regarded as the highest category during the summer, but lower than the peak of the 2nd wave (496).

Cases in older people – rates continue to remain high in the very elderly

Older adults are at a higher risk of disease as a result of becoming infected with COVID, and therefore infection rates in this age group are closely monitored. Chart 2 below, shows the 7 day infection rate between the 24 December and 21 January for 5 different age groups within the East Riding. As reported last week, infection rates have generally decreased in most age groups (allowing for fluctuation, which might see short periods of increasing and decreasing). However, the 60+ group (shown by the blue line with blue circles) remains plateaued.

In residents aged 80 years and over, rates of infections remain high and continue to fluctuate week on week. There were 62 new cases recorded in the 7 days up to the 21 January involving residents aged 80+ years.

Chart 2. East Riding of Yorkshire residents – rolling 7 day rate per 100,000 population of COVID-19 by age group

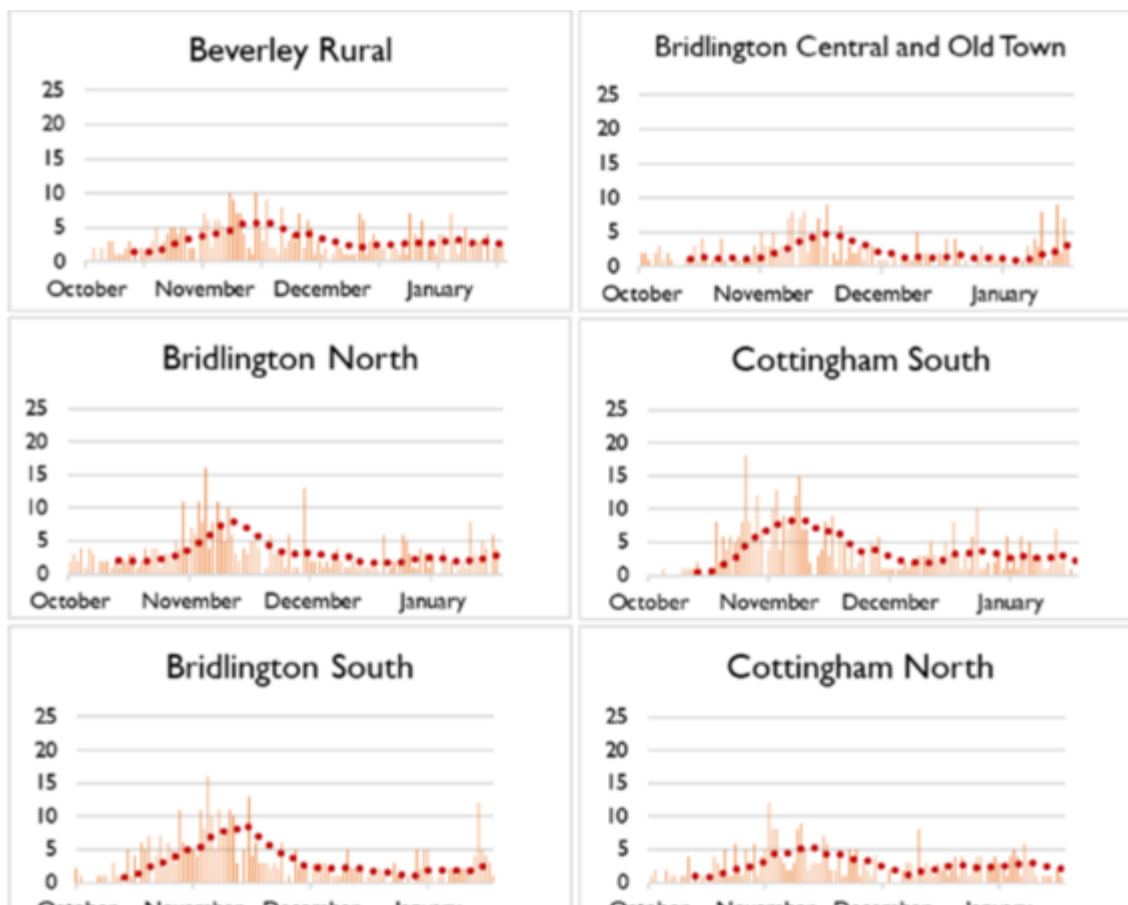


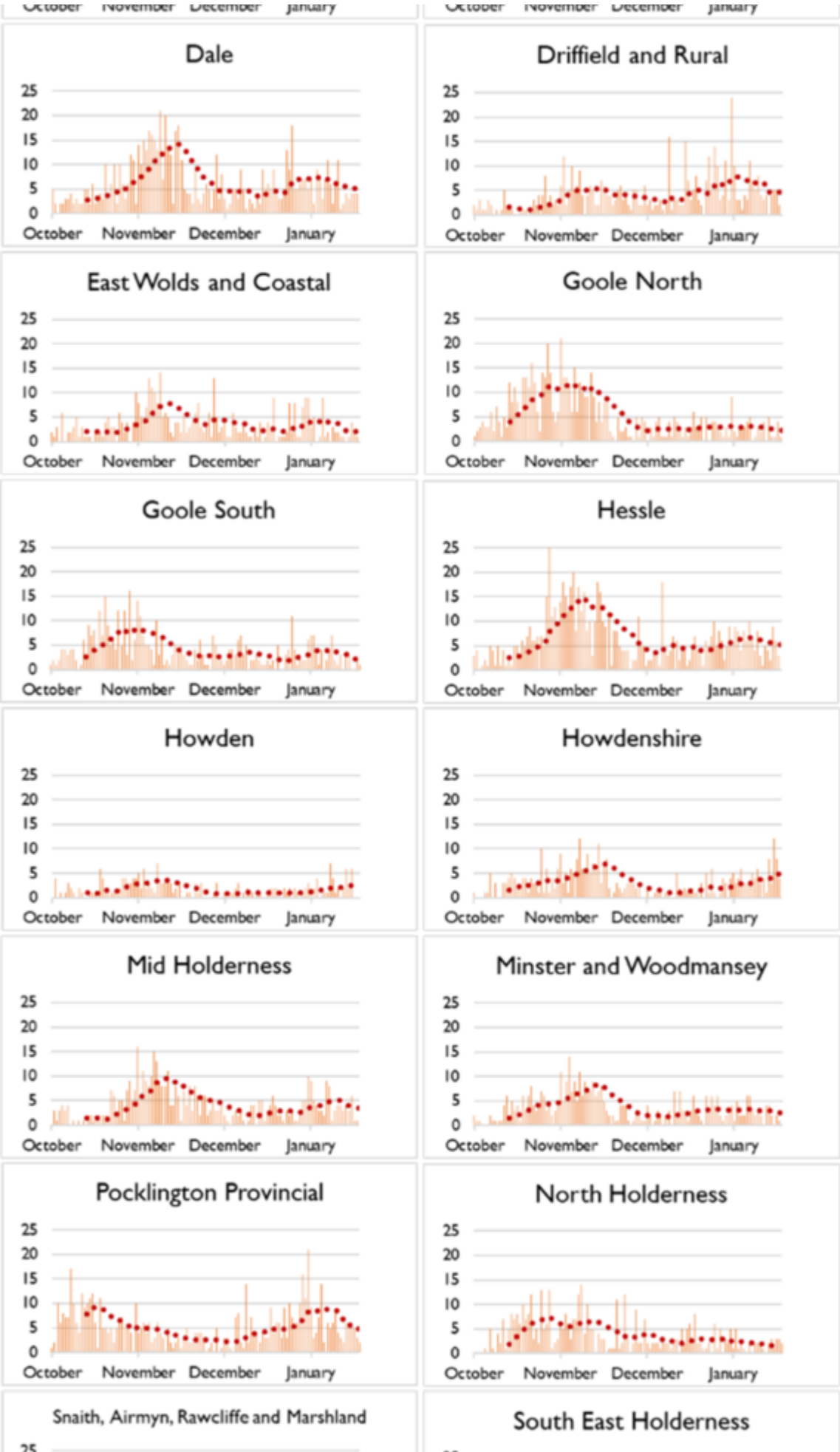
Rates slowly decreasing in most areas of the East Riding

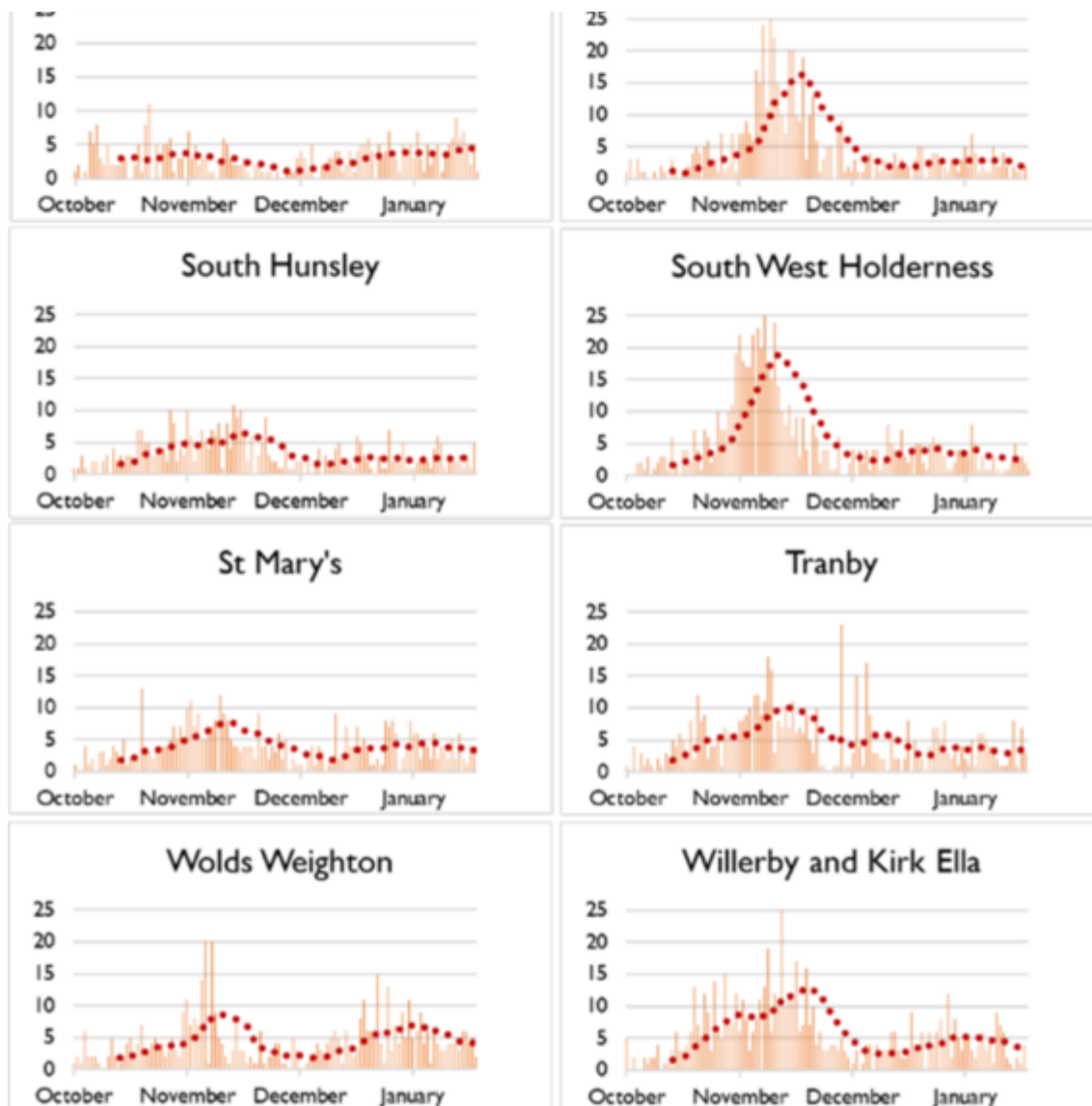
In the 7 days up to the 21st January, more than two thirds of areas within the East Riding experienced a decrease in the 7 day rate compared to the previous week and there were no substantial community outbreaks. As previously stated, there has not been one particular area in the East Riding which has consistently had the highest rate throughout the pandemic. Rates have previously been high in the west (Pocklington and Goole), then at another time they had been higher in the East (Hornsea). More recently rates have been higher in Snaith and Howden.

Chart 3 below shows the trend of new cases by ward, since October.

Chart 3. Infection numbers in East Riding wards since October





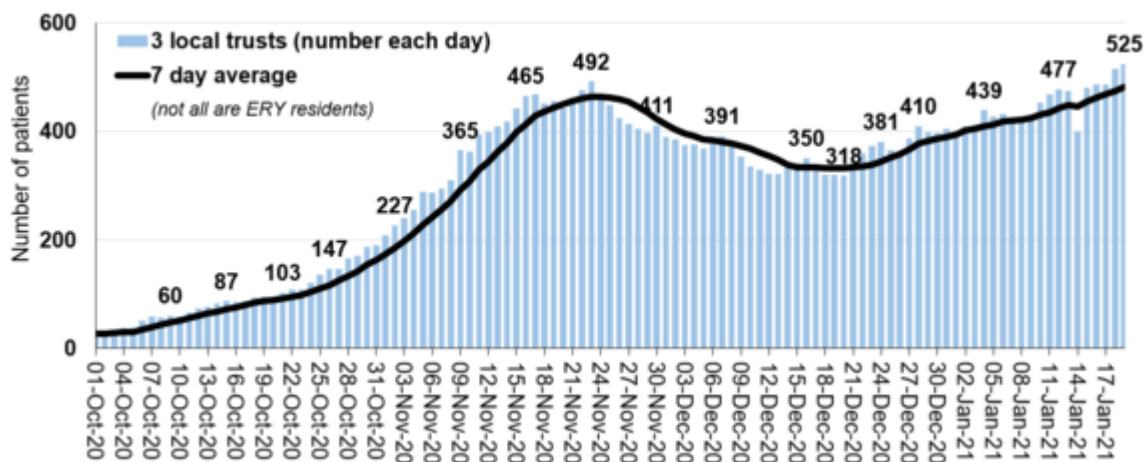


Hospitalisation due to COVID-19 – COVID patients occupying beds increasing and continuing to pressure on hospital services and staff

COVID patients occupying hospital beds continues to rise in number. Chart 4 shows the daily numbers of patients occupying beds (blue bars) in three of our local hospital trusts. During the last peak in late November there had been almost 500 COVID patients occupying beds during 1 day, but this number more recently has been exceeded (525 on 19 January). The black line in the chart (which represents the 7 day rolling average) highlights the increasing trend since mid-December to the present day. In Hull Royal and Castle Hill specifically, the number of COVID patients occupying beds are also showing an increasing trend within the same period.

COVID related hospital deaths continue to remain high, as they have been over the past 11 weeks. Regrettably, it is likely COVID deaths in hospital will continue to occur for many weeks into the future, due to the increases in new infections caught previously.

Chart 4. Total beds occupied by confirmed COVID-19 patients (as at 08:00 each day). 3 local trusts (Hull University Teaching Hospitals, Northern Lincolnshire and Goole, York Teaching Hospital)



Summary

New infections in the East Riding continue to decrease slowly and the 7 day rate of the East Riding, like last week, compares favourably to the higher rates of the region and England. However, case numbers still remain high compared to those of the summer months.

The number of COVID patients in hospital is maintaining an upward trajectory, meaning sustained pressure on local hospital trusts treating severely ill patients. This will most likely remain the case for many weeks to come, due to a rise in people infected in previous weeks, alongside the pressures that winter normally brings.

For additional information on daily COVID-19 cases, please go to:

<https://coronavirus.data.gov.uk>.

Coronavirus British new variant

With the news that a new variant of coronavirus has been identified as potentially easier to transmit and catch the advice remains to stay vigilant about preventing the spread. Immediate and total self-isolation will also stop the spread of this variant.

We continue to monitor the situation in the Humber and we are watching out for any unusual patterns or outbreaks.

Additional information

For additional information on daily COVID-19 cases, please go to:

<https://coronavirus.data.gov.uk>.

National information

The Office for National Statistics contains searchable and comprehensive data and analysis related to the coronavirus (COVID-19) pandemic. [You can visit the site here](#)



National lockdown: stay at home

.In brief, the lockdown measures are:

- You must stay at home. This is the single most important action we can all take to protect the NHS and save lives.
- You must not leave your home unless necessary.
- Stay 2 metres apart from anyone not in your household or bubble.

In the East Riding, whilst in national lockdown, we are urging everyone to do everything they can to stop the spread. The single most important action we can all take to stop the spread of COVID-19 is to stay at home.

Anyone can catch COVID-19 and anyone can spread it. One in three people with the virus can be asymptomatic and inadvertently infect others.

That is why it is VITAL we all stay home as much as possible.

If you do have symptoms, book a test - there is plenty of capacity across our region's testing sites and self-isolate IMMEDIATELY.

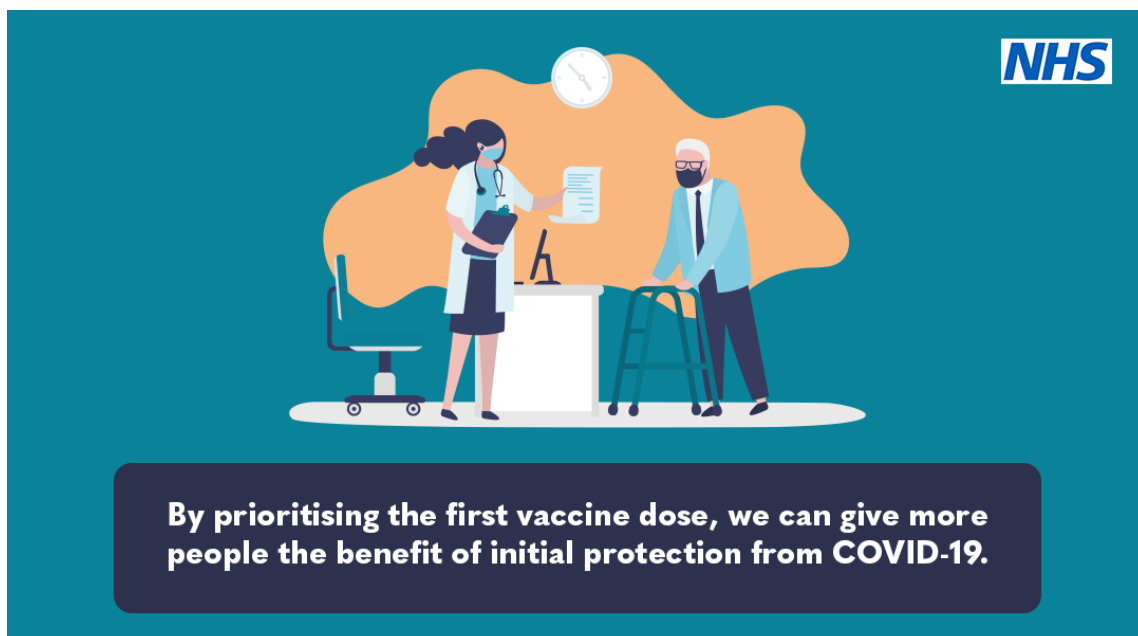
The virus needs people and social contact to spread. Our essential workers are keeping essential services running. We can support them and protect these services by starving the virus if we all stay at home.

Further Government information:

[National lockdown: full guidance](#)

[COVID-19 winter plan](#)

COVID-19 vaccination update



By prioritising the first vaccine dose, we can give more people the benefit of initial protection from COVID-19.

Key messages for the COVID-19 vaccination roll out

East Riding of Yorkshire Council and Members have an important role to play in supporting the NHS to roll out the COVID-19 vaccination programme. Please share the following messages to support the NHS:

- please don't contact the NHS to seek a vaccine, the NHS will contact you
- please be patient, but know no one will be excluded from the vaccination programme
- when the NHS contacts people, they ask that people attend their booked appointments
- and please encourage everyone to continue to follow all the current guidance to control the virus and save lives - even if you've had the COVID-19 vaccine.

We would like to share this information from our NHS colleagues about the COVID-19 vaccination programme.

The NHS is leading on the development and roll-out of the coronavirus vaccine. The NHS vaccination programme board are responsible for the phased roll-out of vaccines, sites, the vaccination process, patient experience and any communications related to this.

FAQs from NHS Hull CCG for elected members about the vaccine can be found [here](#).

[NHS vaccine FAQs for members](#)

Queries on the roll out, prioritisation and venues for vaccination are coming into public health and the CCG at very high levels which is hampering the work of both teams. It would be really appreciated

if Members could hold any vaccination queries until the Members Briefing on 2 February 2021

This week, as of 26 January, Public Health England announced that 6.8 million people have received their first dose of a COVID-19 vaccination, including 80% of all over 80 year olds.

Whilst vaccination data is published daily by the NHS, there have been calls to share more information about vaccines by more localised areas. As of 17 January, the figures for Humber Coast and Vale for vaccine delivery were; cumulative total doses of 142,882 of all vaccines including 68,506 first doses to over 80s and 59,074 first doses to under 80s and 13,508 second doses to over 80s and 1,794 second doses to under 80s.

Current data for Yorkshire and the North East can be found at [Statistics » COVID-19 Vaccinations \(england.nhs.uk\)](https://www.england.nhs.uk/statistics/statisticspages/c/covid-19-vaccinations/).

Currently the vaccine is being offered to people aged 80 and over, some people aged 70 and over, some people who are extremely clinically vulnerable, people who live or work in care homes and all health and social care workers.

In response to the reported changes in supply of the vaccine, the NHS said, "All available vaccine doses are being delivered to vaccination sites and every GP-led vaccination site is receiving a delivery this week. To ensure all of those people in the top priority groups can get vaccinated quickly, targeted deliveries are being made to areas where there are more people left to vaccinate in the priority cohorts."

Work underway to improve access to vaccinations for our residents

- In the last week there were at least seven 'pop up' venues available for local access to vaccinations including, Hornsea, Withernsea and Leven. The 'pop up' venues will be kept under review and made available as vaccinations become available.
- Approval has been given for the use of pharmacies to offer vaccinations across the UK. The NHS Vaccination Planning Team are reviewing sites within the East Riding with those pharmacies who have expressed an interest and meet the criteria to be able to offer vaccinations.

Vaccination scams

Our [website page](#) contains general information about vaccinations and sadly reports of vaccination scams are being reported in our area.

Unfortunately, some people are receiving doorstep callers, fraudulent calls and text messages offering the COVID-19 vaccination. Please remember, the vaccine is only available from the NHS.

The NHS will:

- **NEVER** ask anyone to press a button on a telephone keypad or send a text asking people to confirm you want the vaccine - this scam results in a charge being applied to phone bills.

- **NEVER** ask for payment for the vaccine or for banking details, account numbers and passwords or copies of personal documents.
- **NEVER** cold call and arrive unannounced at a person's home to offer a vaccination, especially in exchange for payment. If this occurs the advice is to close the door and contact the police on 101 to report this fraudulent activity.

Useful links

[Public FAQs for the COVID-19 vaccine](#)

[List of hospital hubs and local vaccination centres](#)

Work underway to improve access to vaccinations for our residents - transport



- Where possible, the council's transportation service will provide door to door MEDiBUS transport for vulnerable residents who have problems getting to vaccination appointments.
- Residents needing assistance should ring the MEDiBUS Call Centre - 0345 6445959.

- Local Community Transport (CT) groups in the East Riding are also providing transport to Vaccination Centres, and the MEDiBUS Call Centre can put residents in touch with their local CT operator for assistance.
- Local CT Operator Holderness Area Rural Transport (HART) has taken around 30 residents from north and mid-Holderness who have difficulty getting to their vaccination appointments to Alfred Bean Hospital in Driffield. They are offering a door-to-door minibus service, with socially distanced seating. They have also taken residents to vaccination appointments at Hull hospitals, and Bridlington and Hedon surgeries.
- HART has been fortunate to have some new volunteers come forward to assist with minibus driving and have received some donations to help with the cost of operating the service.
- The Joseph and Annie Cattle Trust has also provided funding of £2000 assist local CT groups provide transport to vaccination sites.



Lateral flow tests - an update

The LFT (lateral flow test) sites are working well offering the identified groups of frontline workers rapid turn-around tests. There are centres are not for general public use or walk-ins and have been planned using the learnings from other national pilots and offering the most effective use of our LFTs.

There are seven LFT sites established based at Beverley, Bridlington, East Riding Leisure Haltemprice, Goole, Hornsea, Pocklington and Withernsea with another site opening at Bishop Burton later this week.

Lateral flow tests (LFTs) are a really important tool as we all work together to control the spread of COVID-19. With around 1 in 3 people not showing symptoms of COVID-19, testing those without symptoms is vital to breaking chains of transmission and especially important for our essential and key workers who are keeping services running.

A new online booking system for lateral flow testing is will come online this week and enables the targeted groups the choice to book appointments, when convenient. It will be open for all seven (and soon to be eight) LFT sites across the region.

Currently, targeted groups are sent invites to access lateral flow testing by their service area contacts (currently there are around 30 of these service area contacts in the council who distribute invites to front-line staff).

At the LFT sites, test results are sent around 30 minutes after testing. The self-administered swab test takes around 10 minutes to complete and all tests are supervised by trained operatives. All tests must be booked in advance and booking online will help regulate capacity and social distancing at LFT sites, although the telephone booking line will remain open Monday to Friday 9.30am – 4.30pm.

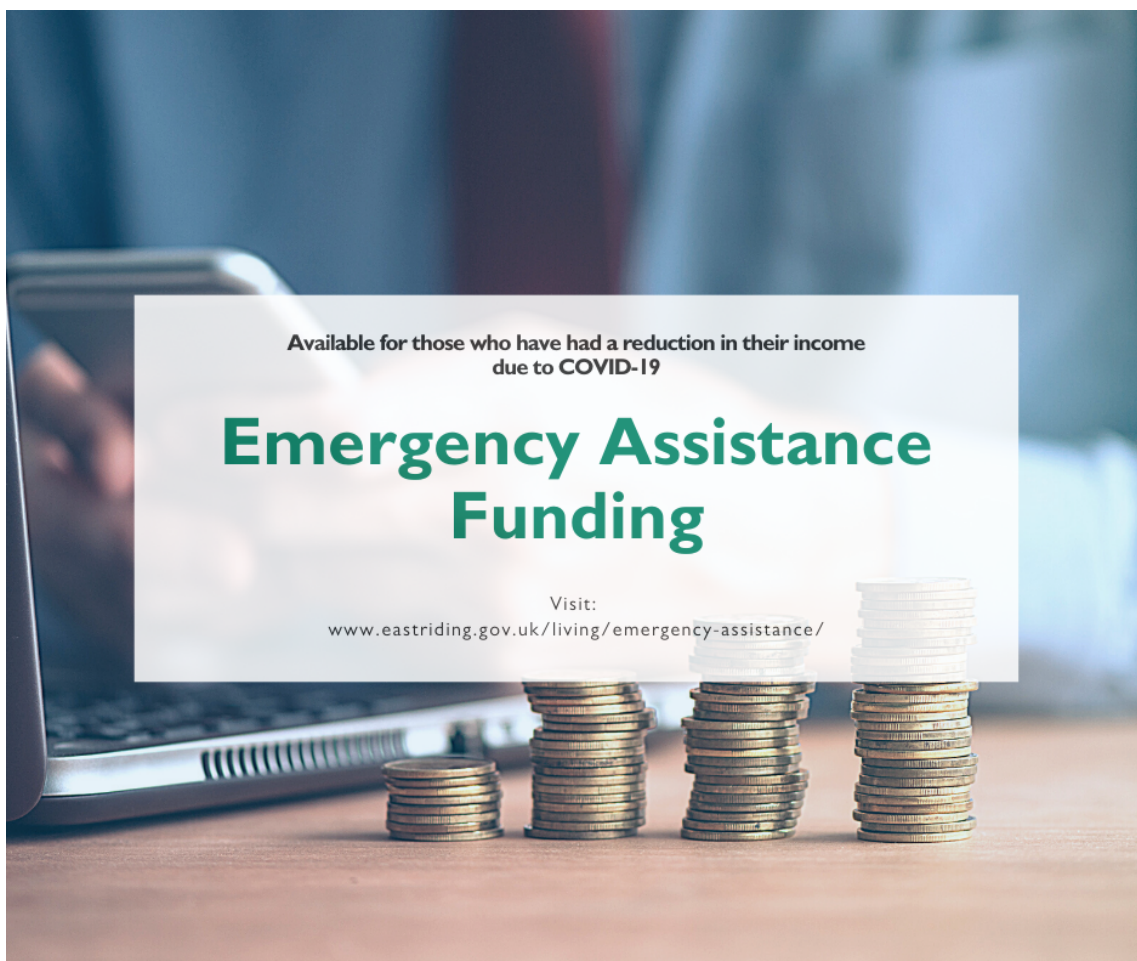
Attendance at these sites is by invitation only and they offer East Riding of Yorkshire Council front line staff, emergency services staff, key workers such as bus drivers, funeral directors, and unpaid carers regular testing to prevent the spread of COVID-19.

The aim of our approach to LFT is 'test to find'. This means that we identify positive cases quickly, ensure isolation and offer support as appropriate. LFTs are also used in outbreak management to achieve the same aim with the intention of reduction in transmission of the virus to others.

COVID-19 testing for the public

There is lots of capacity for PCR tests for the general public. Anyone with symptoms can ask for a test via <https://www.gov.uk/get-coronavirus-test> or by calling 119. COVID-19 test centres are situated across the East Riding, they are open seven days a week and home tests can be ordered if residents cannot get to test centres.

Support for businesses and residents



For many businesses and residents these coming weeks will be the most challenging they have ever faced. As a council, we will continue to do our utmost to support our communities as we deal with the ongoing effects of the pandemic and the latest restrictions.

On 21 January 2021, the council made £18.5 million in business grants payments, which include the new one-off top-up payment.

The very latest information for businesses and support available can be found on our website [here](#).

And for residents, phase two of the winter grants scheme is open until 31 January. Find out more information and access application forms [here](#). Further information about other forms of support, such as NHS Test and Trace payments can also be found on our website.

An overview of help and support available to residents and businesses can be found at www.eastriding.gov.uk/help

February half-term

Schools will close as usual over February half-term and are not expected to remain open to vulnerable children and the children of critical workers during that week. Currently, there is no national scheme to coordinate free school meal parcels or vouchers for February half-term.

However, in the East Riding discussions are taking place with headteachers to agree the process to access alternative provision for those entitled to free school meals for half term. An update will be supplied next week.

Public protection and COVID-19

Throughout the pandemic, public protection teams have continued with all of their front-line services such as trading standards/CTC, licensing, food safety, animal health, private sector housing, pest, and pollution control, as well as having an important role to play throughout our COVID response.

Throughout the pandemic public protection teams have been undertaking proactive advice and support as well as compliance checks on businesses. This applies during lockdown and throughout other restrictions to ensure workplaces remain COVID-secure for their staff and the public. During this lockdown this has included essential retail such as food retailers and also takeaway premises which sell food and drinks.

The public protection COVID team respond to intelligence and complaints from residents and other businesses in relation to alleged breaches of the COVID-19 regulations, including visits and enforcement action as necessary. We have seen that overall compliance in the East Riding has been very good.

Recently COVID support wardens have been employed to complement the work of the public protection officers, in particular to carry out supermarket checks following a specific request from the Government to ensure these businesses are doing all they can to remain COVID-secure and safe for residents.

The team have also offered support to caravan site owners and the mobile homeowners to reach solutions in the current lockdown situation where individuals cannot return to the sites. We are already planning ahead for March onwards when many sites would naturally re-open.

The team also undertake outbreak management visits to sites where businesses have seen a number of COVID-19 positive cases to look at causes for transmission and to ensure that employers are doing what they can to protect those working in these environments be they factories, shops or offices. Through these visits the team are well placed to advise on trends emerging.

Other important services to residents and the region is advising businesses on what to do in light of COVID, such as preparing sports grounds for the return to sports or assisting new business to get up and running for when lockdown ends with advice on food registrations and licensing requirements.

Community hub update



Your East Riding **Community Hub**

Here for you.

East Riding of Yorkshire Council is working with volunteers, businesses and community partners to help residents stay safe and well during the coronavirus pandemic.

If you need help with medication contact your local pharmacy and they may be able to deliver it.

If you need help getting food get in touch with your local supermarket or retailer and they may be able to deliver to you.

If you already have friends, family, neighbours or volunteers who can help you, you should continue with these arrangements.
If you do not have support network call **(01482) 393919**
email **covid@eastriding.gov.uk** or visit **eastriding.gov.uk/covid19**

3 Steps To Safety
Prevent. Notice. Act.




The Hub is designed to provide support to people who need it during the pandemic and who are not able to fall back on friends, family, neighbours, carers or local community groups. Throughout, the aim has been to supplement, but not replace, the excellent voluntary work being undertaken by local community groups, town and parish councils and many others. It has operated continuously since March 2020.

The contact centre is open Monday to Friday (excluding bank holidays), from 9am to 5pm. Call (01482) 393919 or email covid@eastriding.gov.uk. Please share these details with any residents who you think may need help during these difficult times.

Help to spread the word, not the virus



Our website contains a wide range of downloadable COVID-19-related information and marketing resources, such as posters and social media artwork.

We also have a supply of banners, external A1 posters and internal A1 posters. [Contact the corporate communication team](#) to arrange delivery.

Find localised A4 posters and social media images for every town and parish council area. Search keywords such as "poster" or "facebook" to easily find the latest images to share.



All materials can be found [here](https://covid19.eastriding.gov.uk/resources/)

<https://covid19.eastriding.gov.uk/resources/>

Please help us to spread the word and not the virus.

Quick links for support

[Support for businesses](#)

[Support for residents](#)

[Service updates](#)

Our website www.eastriding.gov.uk/3stepstosafety contains a large range of local information and links to national guidance including service updates, what restrictions are in place, how and when to self-isolate and what support is available to individuals and businesses in the East Riding.

Quick links include:

- Local restrictions: <https://covid19.eastriding.gov.uk/local-restrictions/>
- Changes to council services: <https://covid19.eastriding.gov.uk/service-updates/>
- Help and support: <https://covid19.eastriding.gov.uk/support/>
- Self-isolate and protect others: <https://covid19.eastriding.gov.uk/self-isolate/>
- School self-isolation guide: <https://covid19.eastriding.gov.uk/self-isolation-guide-for-school-children/>
- Download resources: <https://covid19.eastriding.gov.uk/resources/>



Next edition: 3 February

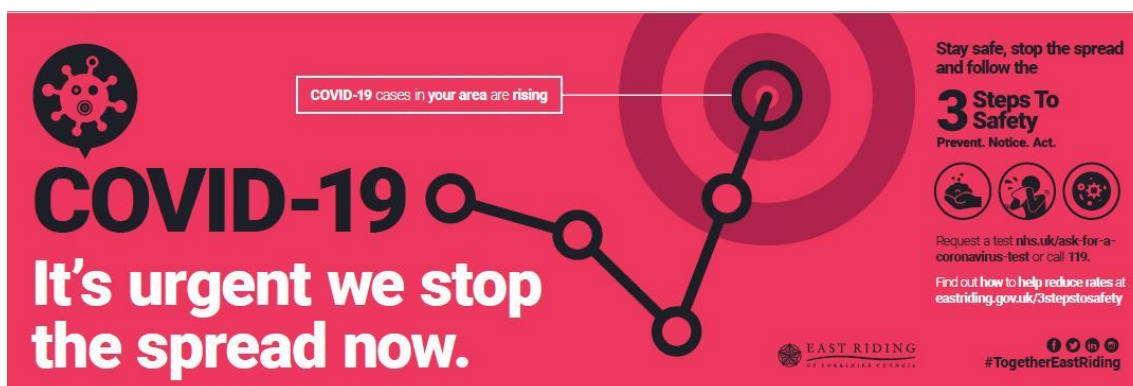
Questions and further information

We can assure you that we will be continuing to do our best to keep delivering services to the highest standard wherever possible however we may need to prioritise essential services at different times as we deal with the pandemic. If we do need to significantly change any service delivery at short notice, we will endeavour to keep you informed.

To help officers, we ask members to please continue to direct any questions and suggestions you may have for service areas to the group offices and they will be dealt with as quickly as possible. This includes any questions and requests for information in relation to the situation with community infection rates, schools and cases in your wards. We will notify you about any significant situations which may occur in your areas and which you need to be aware of.

Otherwise, the council's website at www.eastriding.gov.uk continues to have up-to-date information and guidance relating to COVID-19 and council services so we encourage you to also check online if you have any questions yourselves or questions on behalf of residents and businesses.

If you have any suggestions or feedback for this weekly members bulletin [please click](#) to send directly to the corporate communications team.



Stay Connected with East Riding of Yorkshire Council:

SUBSCRIBER SERVICES:
[Manage Subscriptions](#) | [%5b%5bONECLICK_UNSUB_URL%5d%5d]Unsubscribe
All | [Help](#)

The information in this email, and any attachments, are confidential and intended for the person they are addressed to.

If this email was not intended for you, you may not copy, use or share the information in any way. Please email postmaster@eastriding.gov.uk to advise us that you have received this email in error.

East Riding of Yorkshire Council is able to, and reserves the right to, monitor email communications passing through its network.

The council does not accept service of legal documents by email.

We have made every effort to virus check this email and its attachments. We cannot accept any responsibility or liability for loss or damage which may happen from opening this email or any attachment(s). We recommend that you run an antivirus program on any material you download.

All East Riding of Yorkshire Council emails and attachments (other than information provided pursuant to the Freedom of Information Act 2000 or the Environmental Information Regulations 2004) are private and intended solely for the use of the individual or entity to whom they are addressed. Unauthorised use is not permitted. If this email was not intended for you, you may not copy, use or share the information in any way. Please email postmaster@eastriding.gov.uk to advise us that you have received this email in error. The Council makes every effort to virus check this email and its attachments. We cannot accept any responsibility or liability for loss or damage which may happen from opening this email or any attachment(s). It is recommend that you run an antivirus program on any material you download. This message has been sent over the internet and unless encrypted email should not be treated as a secure means of communication. Please bear this in mind when deciding what information to include in any email messages you send the Council. The Council does not accept service of legal documents by email. The Council reserves the right to monitor record and retain incoming and outgoing emails for security reasons and for monitoring compliance with our policy on staff use. As a public body, the Council may be required to disclose the contents of emails under data protection laws and the Freedom of Information Act 2000. We will withhold information where there is a good reason to do so. For information about what we do with personal data see our privacy notices on www.eastriding.gov.uk/privacyhub.